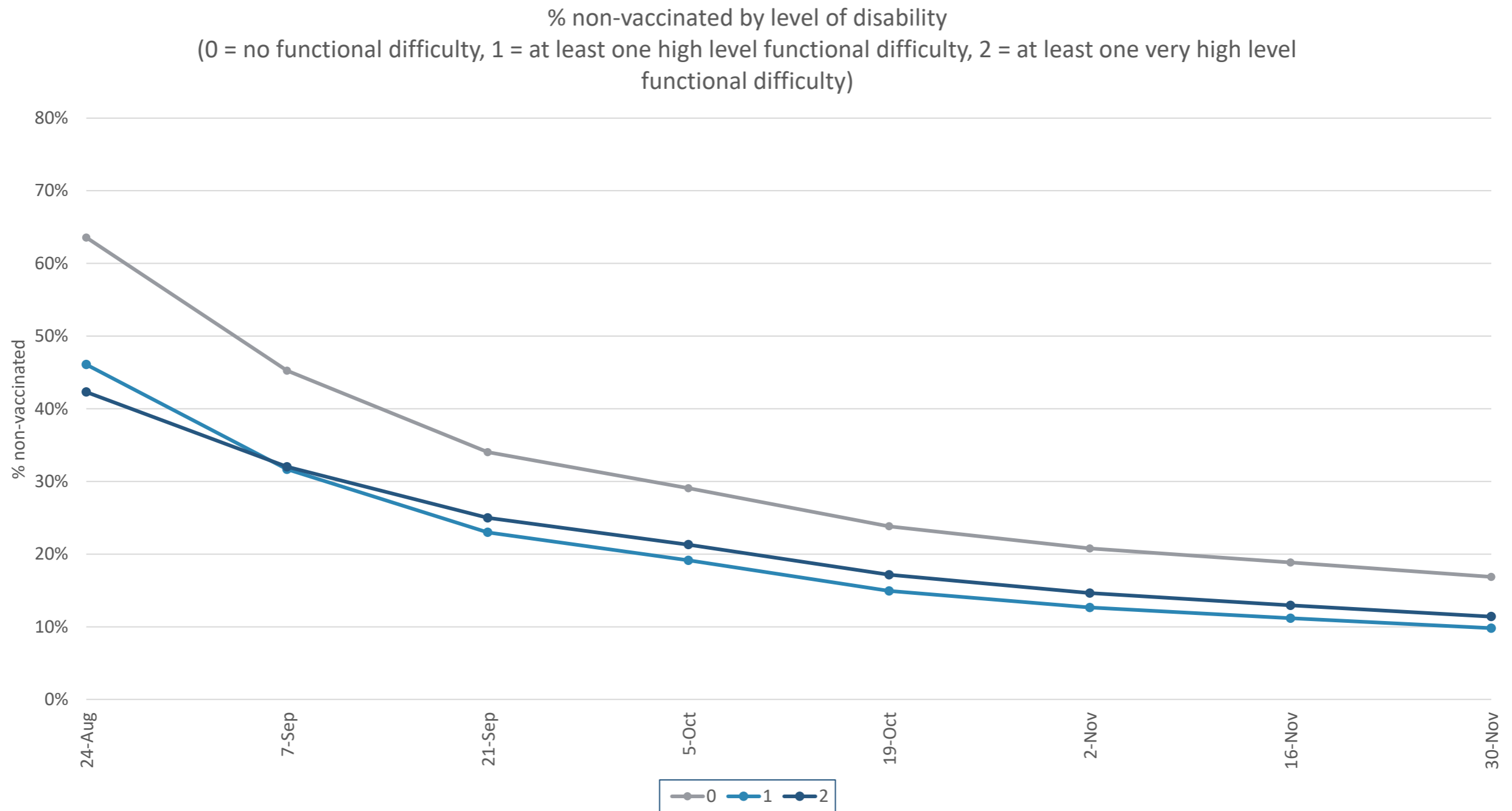


## Key Insights:

The WGSS question set was used to identify **1.2 million disabled people**. We have simplified the WGSS scores to an overall disability indicator as follows:

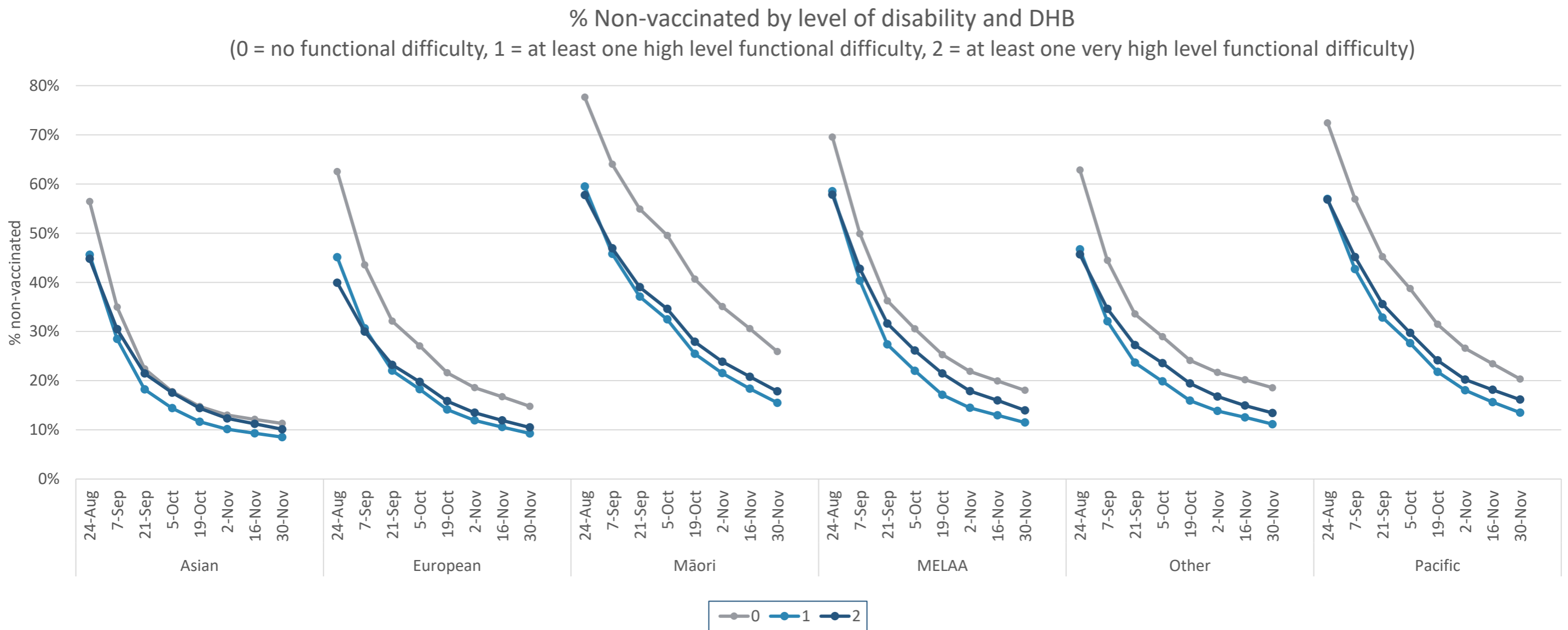
- **0** if no functional difficulty;
- **1** if an individual has at least one functional difficulty classed as high, but none classed as very high; and,
- **2** if an individual has at least one functional difficulty classed as very high



## Key Insights – Ethnicity and Level of Difficulty

- Rates of non-vaccination are lower in those with a disability (categories 1 or 2 in the graph below) compared to the non-disabled population.
- Rates of non-vaccination in more disabled people (category 2) are generally higher than that of less disabled (category 1).
- Non-vaccination rates for Māori are steadily decreasing whereas the rates for all other ethnicities have slowed.

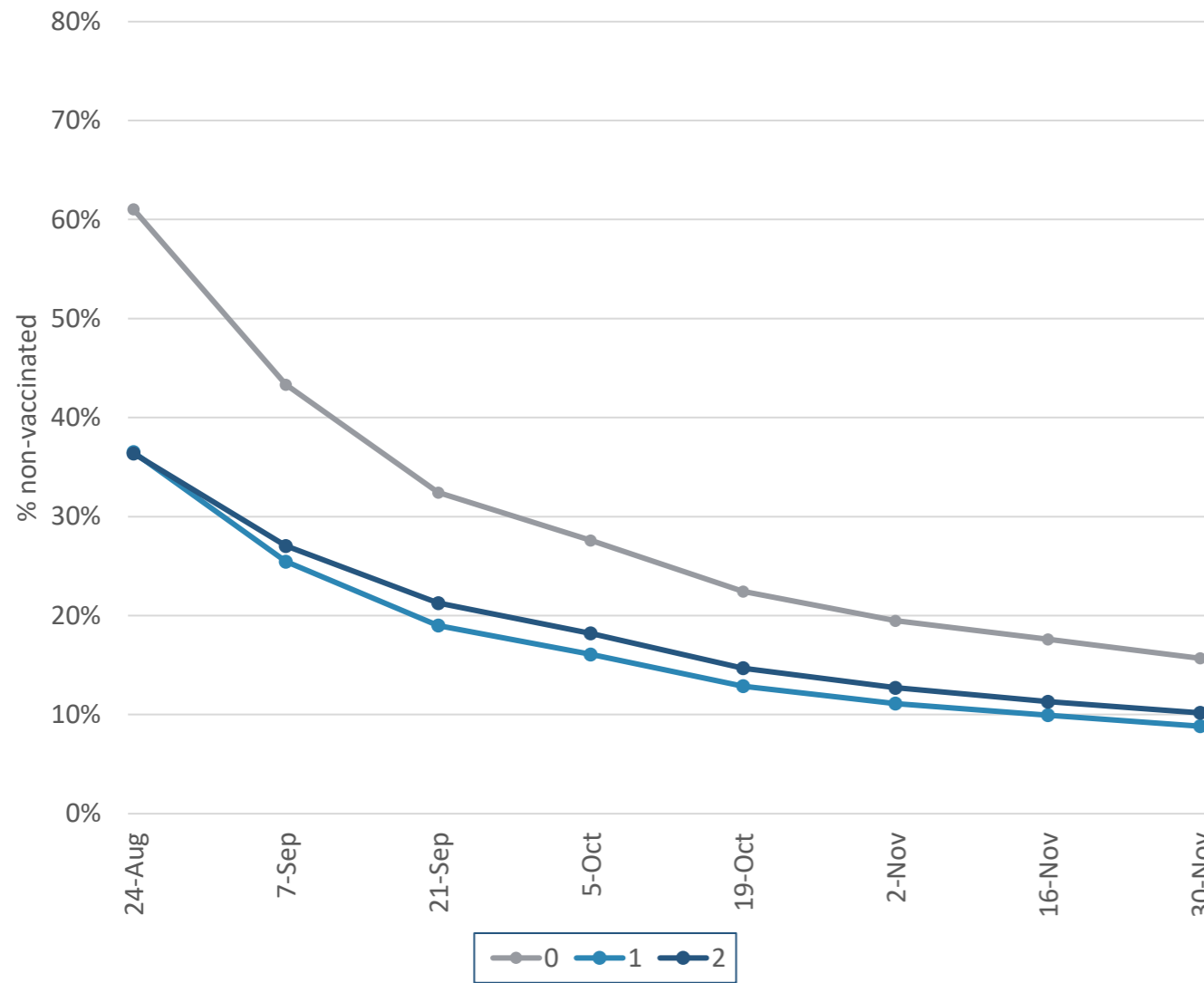
Note: the figure below displays total ethnicity, therefore an individual may appear in more than one of these categories.



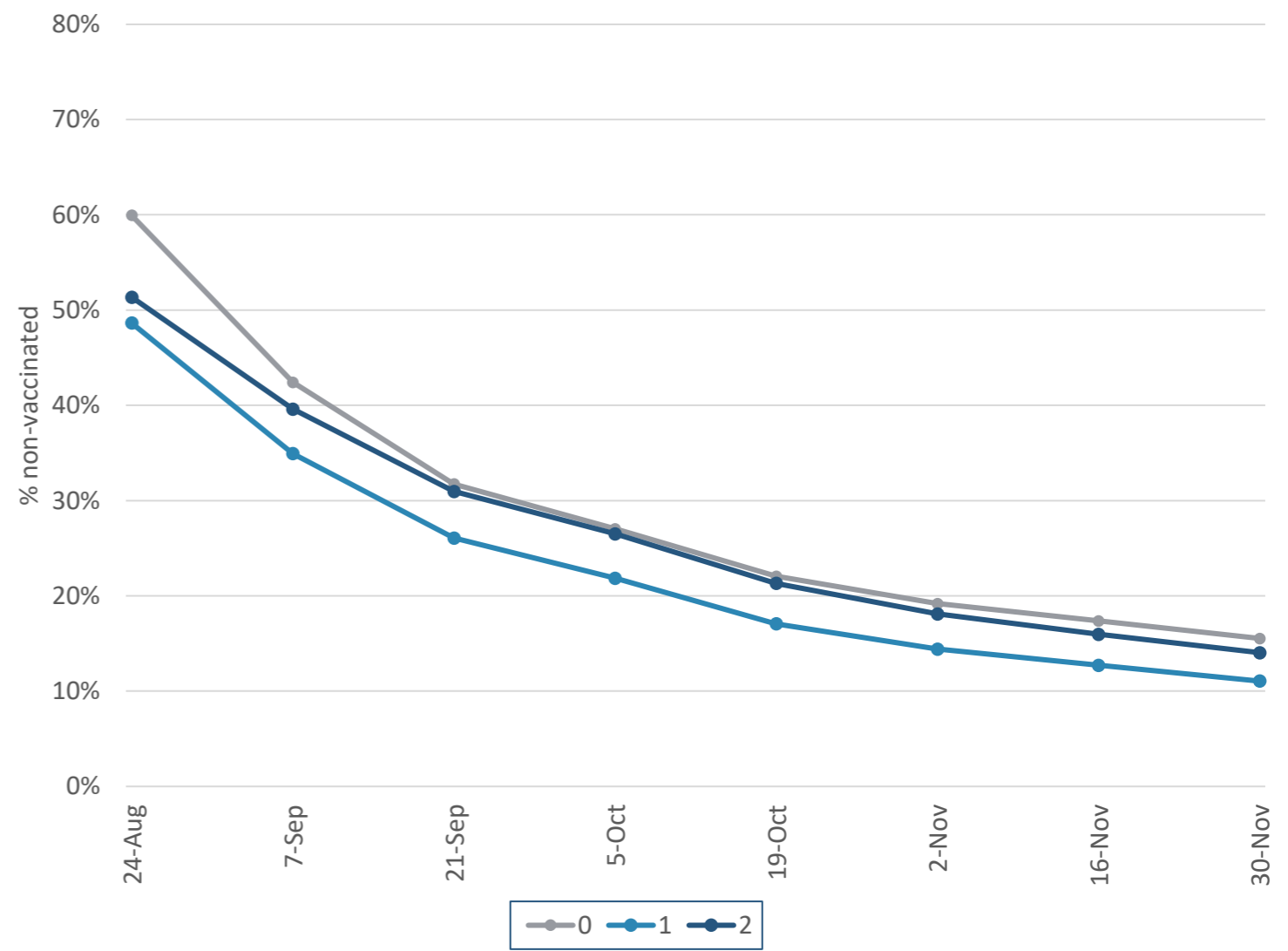
**Key Insights – Hearing and Remembering Difficulty**

- Levels of non-vaccination for overall disabled population is low. However, the biggest gaps are observed among those with hearing and remembering difficulties.
- Non-vaccination is lower among those with hearing difficulties (5.5 percentage points lower than non-disabled, however non-vaccination is very similar to overall disabled population).

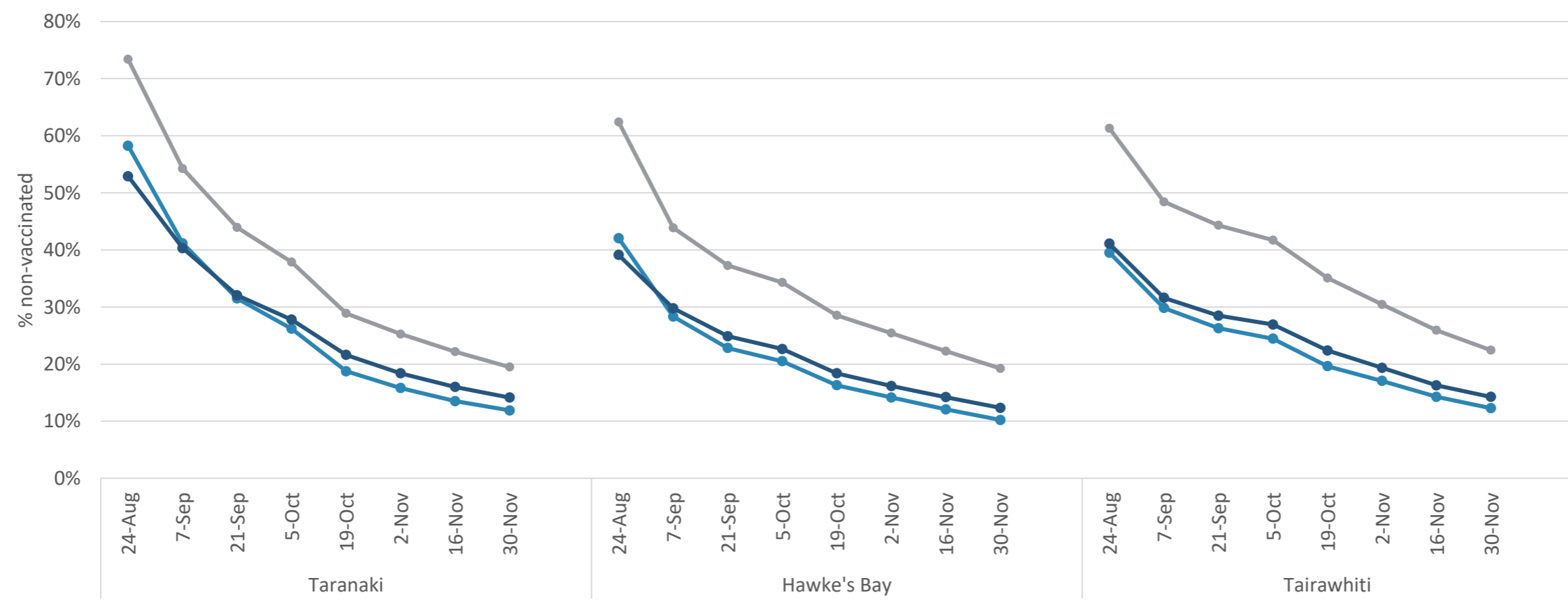
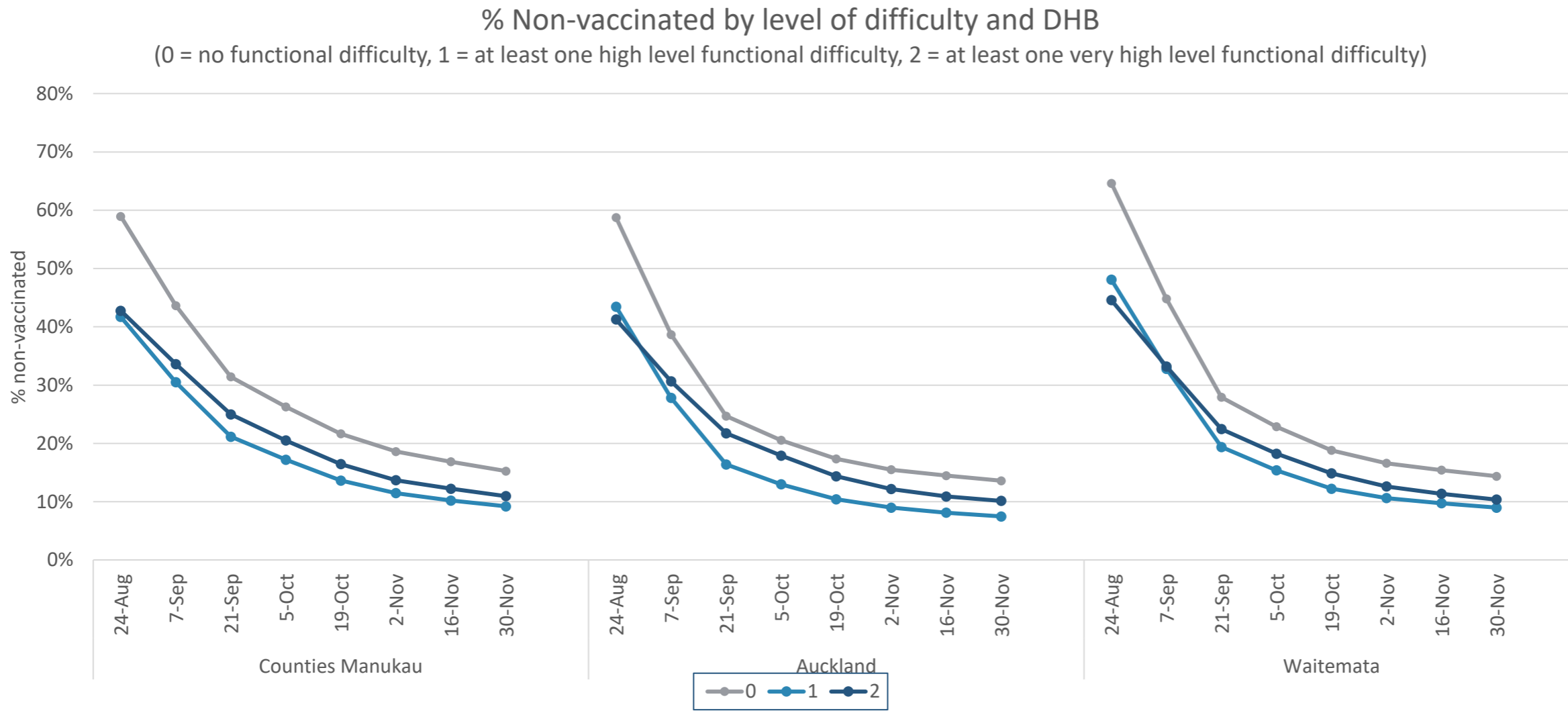
% Non-vaccinated by level of **hearing** difficulty  
(0 = no difficulty hearing, 1 = high difficulty hearing, 2 = very high difficulty hearing)



% Non-vaccinated by level of **remembering** difficulty  
(0 = no difficulty remembering, 1 = high difficulty remembering, 2 = very high difficulty remembering)



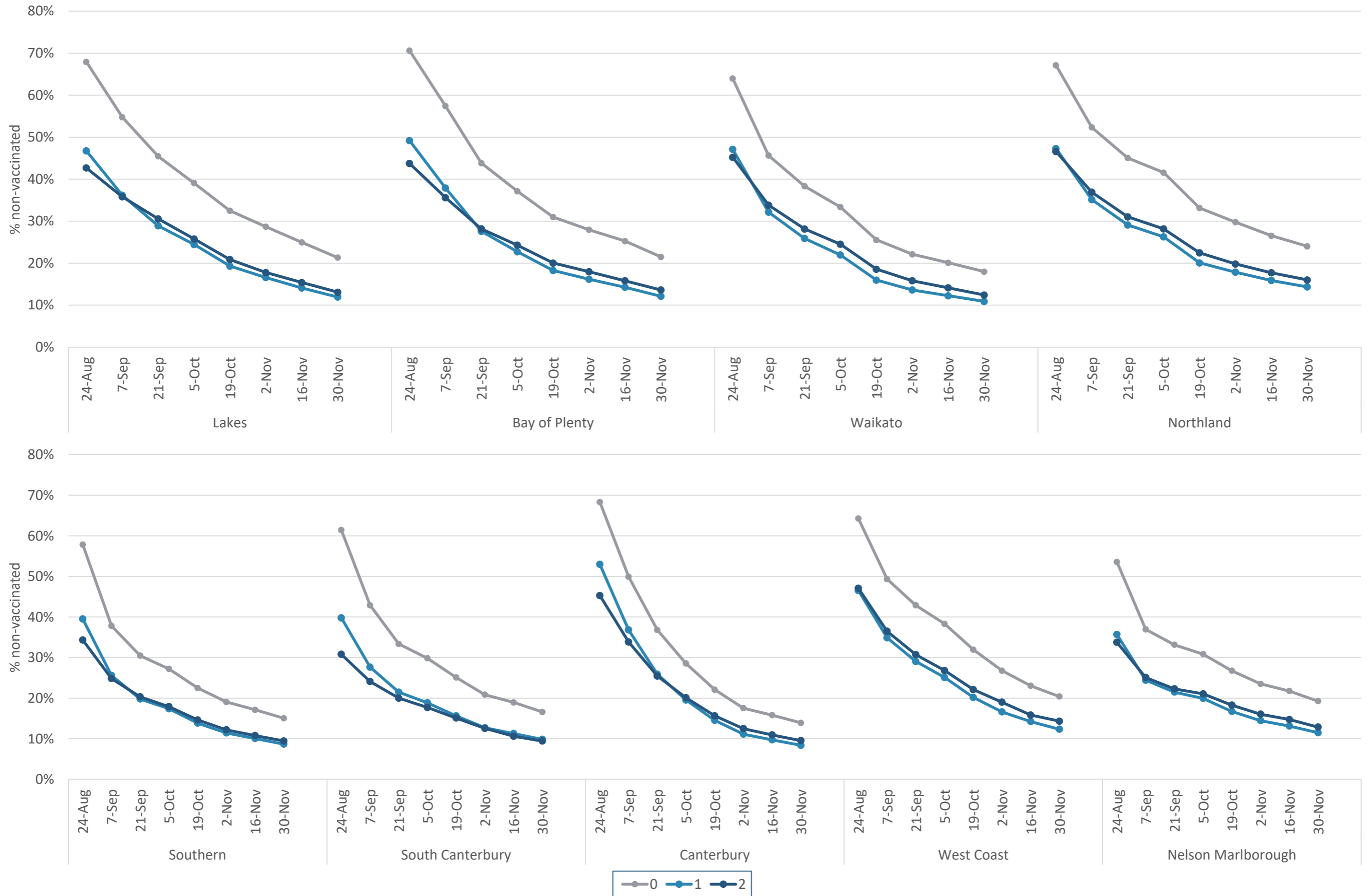
# COVID-19 Immunisation Register Data Analysis - DHB vaccination status (24 Aug to 30 Nov)



# COVID-19 Immunisation Register Data Analysis - DHB vaccination status (24 Aug to 30 Nov)

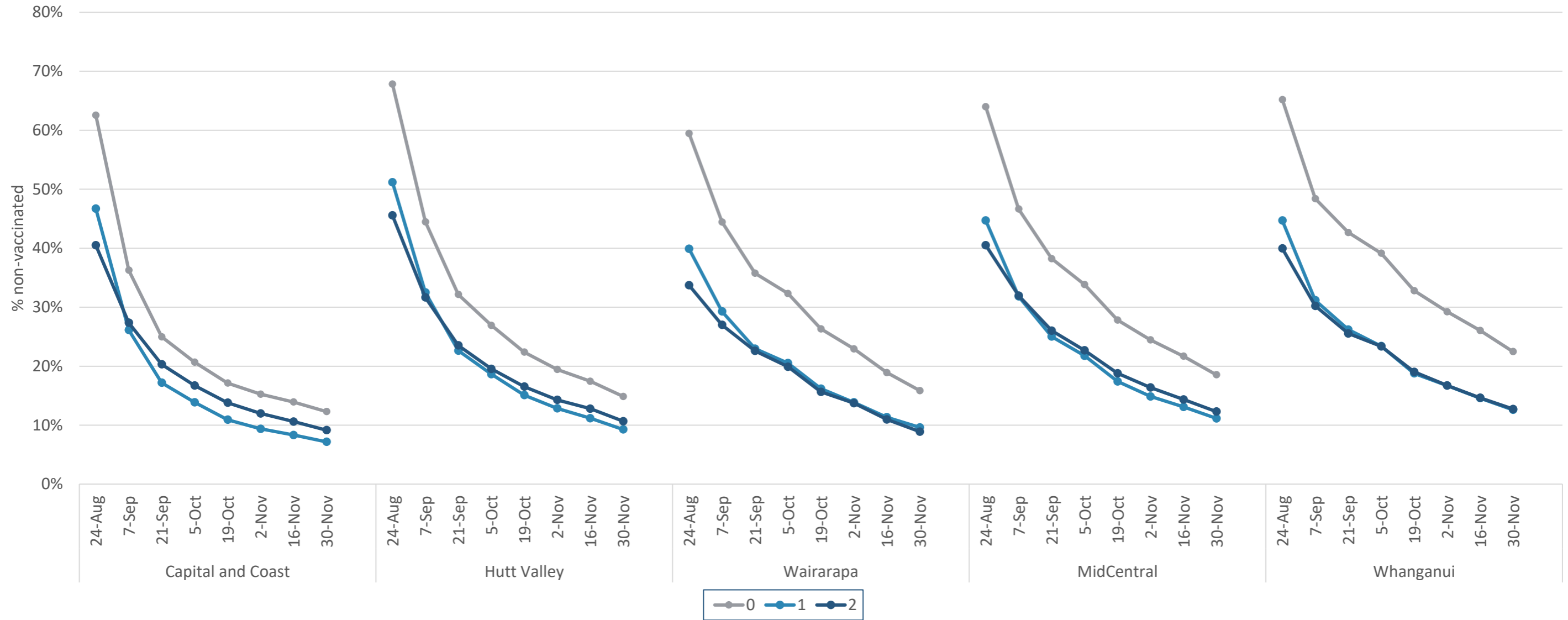
## % Non-vaccinated by level of difficulty and DHB

(0 = no functional difficulty, 1 = at least one high level functional difficulty, 2 = at least one very high level functional difficulty)



## % Non-vaccinated by level of difficulty and DHB

(0 = no functional difficulty, 1 = at least one high level functional difficulty, 2 = at least one very high level functional difficulty)



## Disclaimers for output from StatsNZ Surveys

Access to the data used in this study was provided by Stats NZ under conditions designed to give effect to the security and confidentiality provisions of the Statistics Act 1975. The results presented in this study are the work of the authors, not Stats NZ or individual data suppliers.

## Disclaimers for output produced from the IDI

These results are not official statistics. They have been created for research purposes from the Integrated Data Infrastructure (IDI) which is carefully managed by Stats NZ. For more information about the IDI please visit <https://www.stats.govt.nz/integrated-data/>.

## IDI metadata

Description of variables drawn out of the IDI for the purposes of this analysis

### Variable name Description/Notes

Variable name	Description/Notes
Overall disability indicator	We have categorised our overall disability indicator as follows: 0 if no functional disability; 1 if an individual has at least one functional disability classed as high, but none classed as very high; and, 2 if an individual has at least one functional disability classed as very high.
Individual disability indicators ( <i>Seeing, Hearing, Walking, Remembering, Washing and Communication</i> )	The individual functional disability groups have been created via the WGSS questions ( <a href="#">Microsoft Word - Information Sheet Washington Group Short Set of Questions on Disability.docx (odi.govt.nz)</a> )  <ol style="list-style-type: none"> <li>1. Do you have difficulty seeing, even if wearing glasses?</li> <li>2. Do you have difficulty hearing, even if using a hearing aid?</li> <li>3. Do you have difficulty walking or climbing steps?</li> <li>4. Do you have difficulty remembering or concentrating?</li> <li>5. Do you have difficulty (with self-care such as) washing all over or dressing?</li> <li>6. Using your usual (customary) language, do you have difficulty communicating, for example understanding or being understood?</li> </ol> Values based upon the WGSS response scales were mapped to the overall disability indicator as follows:  <i>No - no difficulty</i> → 0 – No disability <i>Yes – some difficulty</i> → 1 – High level functional disability <i>Yes – a lot of difficulty</i> → 2 – Very high level functional disability <i>Cannot do at all</i> → 2 – Very high level functional disability

