

The New Zealand Disability Strategy

**Making a World of Difference
Whakanui Oranga**



Pictorial Version

Reprinted June 2003 by the Office for Disability Issues.
Copies of the New Zealand Disability Strategy are available on request from:

Office for Disability Issues
P O Box 12 136
Wellington
phone: 04 916 3300
fax: 04 918 0075
email: odi@msd.govt.nz
website: www.odi.govt.nz

Office for Disability issues

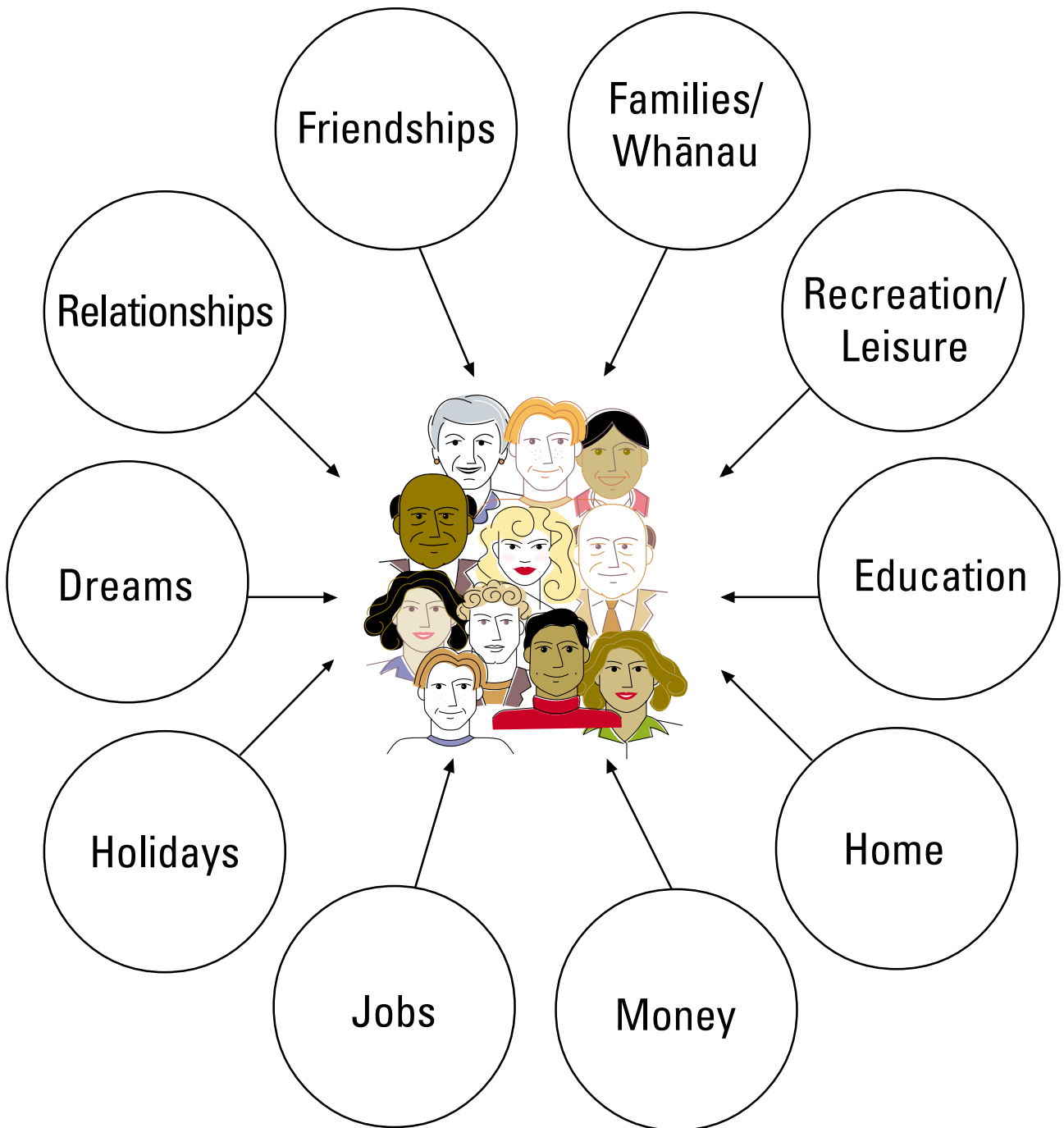
Te Tari Mō Ngā Take Hauātanga
Administered by the Ministry of Social Development

First published in June 2001 by
the Ministry of Health
Manatū Hauora
Wellington, New Zealand
ISBN 0-478-261-70-5 (Book)
ISBN 0-478-261-71-3 (Internet)
HP 3451

Acknowledgement

The Ministry of Health would like to thank the IHC
for its involvement in developing this resource.





ALL people want all or some of these things.

BUT

Sometimes this doesn't happen.
The New Zealand Government is concerned about
this and wants to change it so:



People are included



People participate



**People have a lot of new opportunities
in their lives.**

What does all this mean?



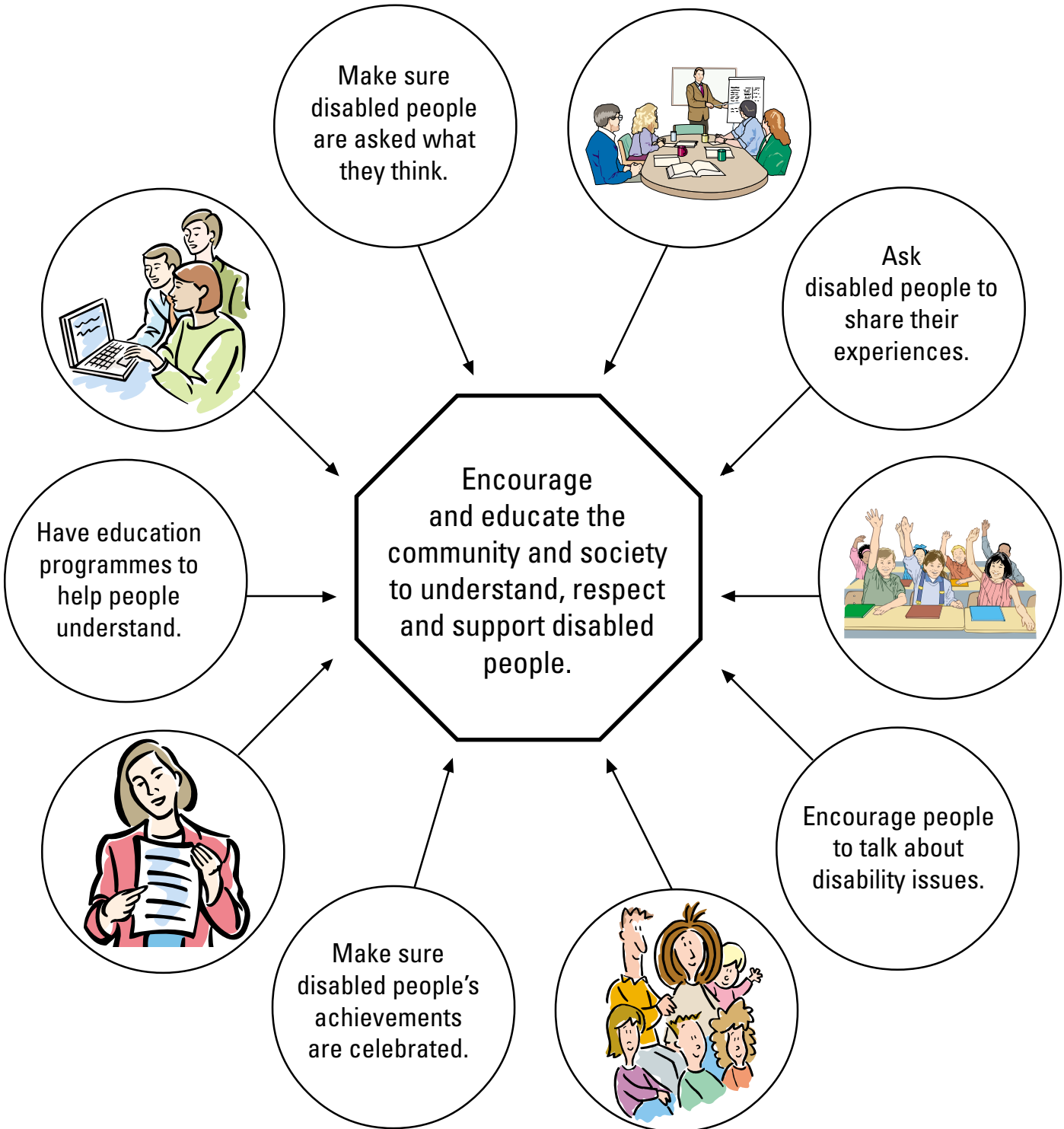
What action will the Government take?



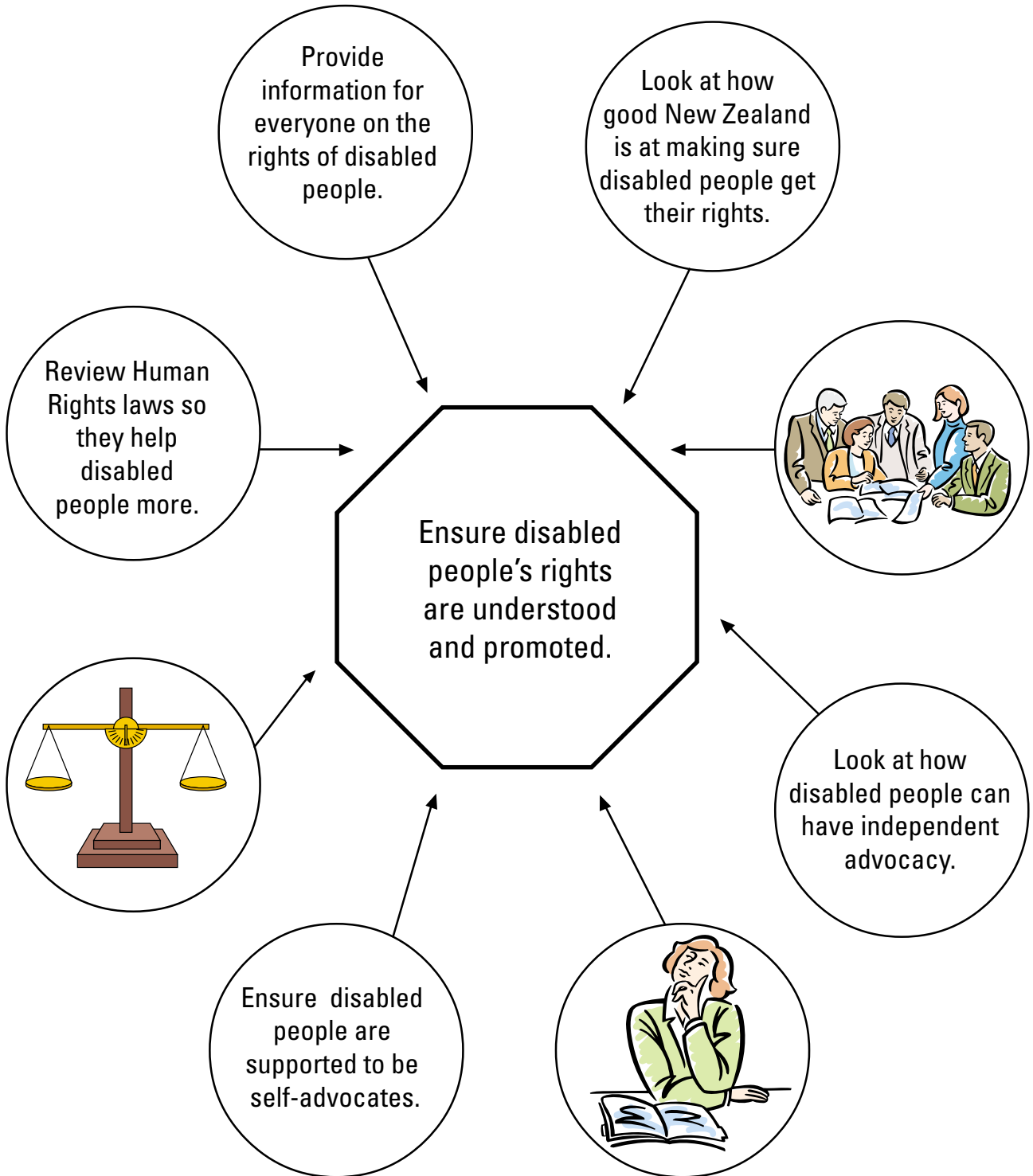
The New Zealand Disability Strategy is the Government's answer.

The Strategy has 15 objectives and actions for all of these.

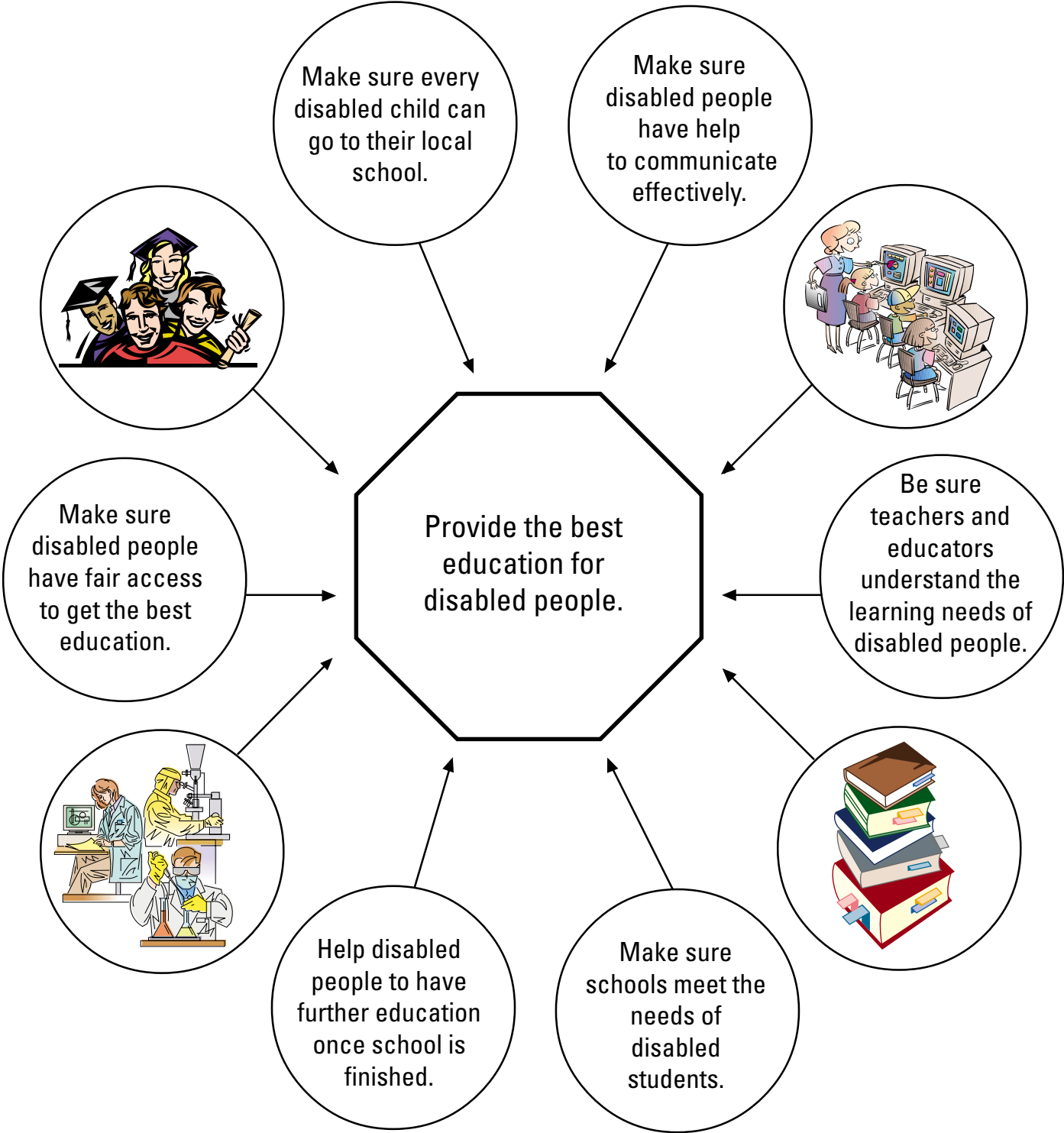
Objective 1



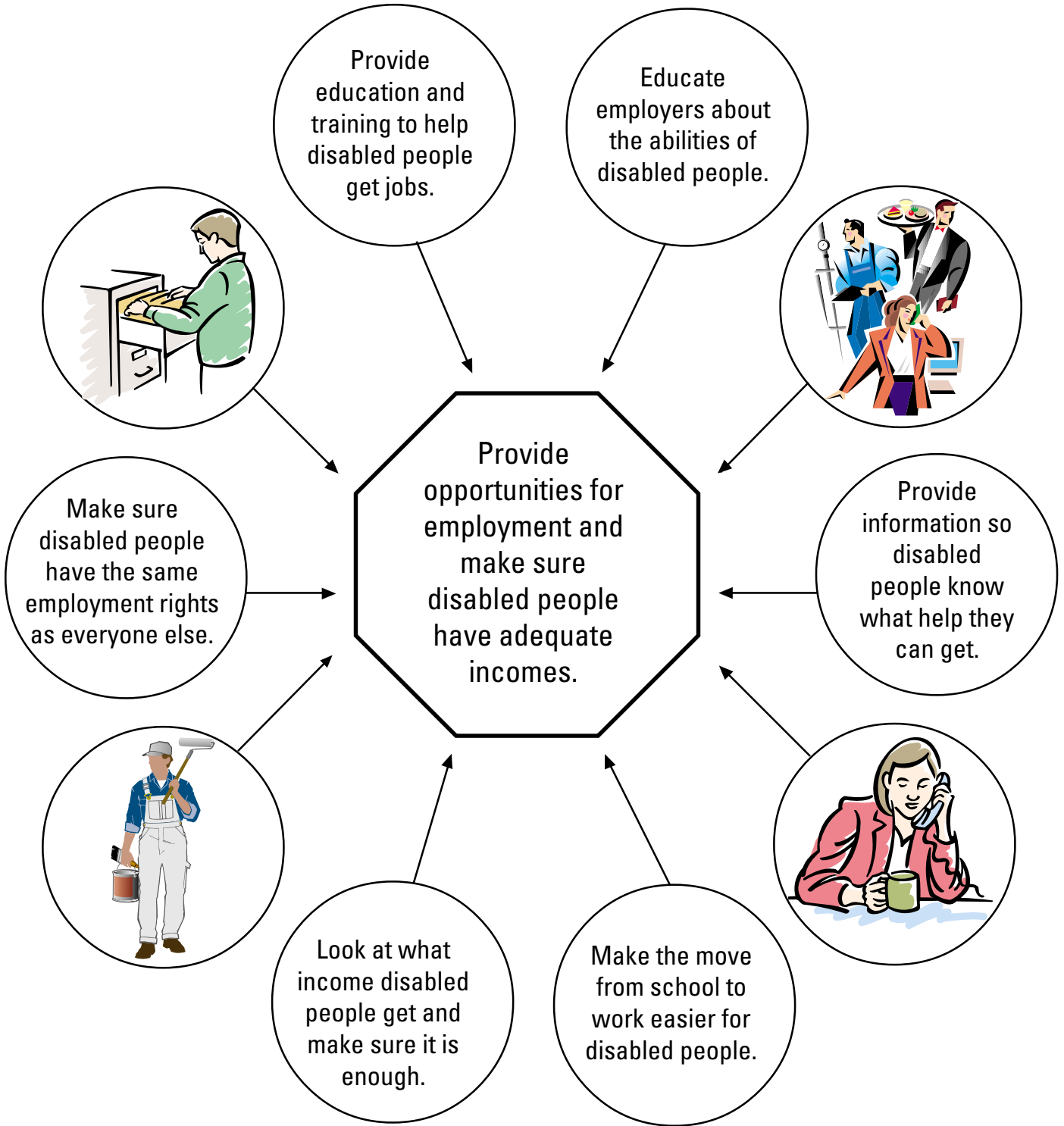
Objective 2



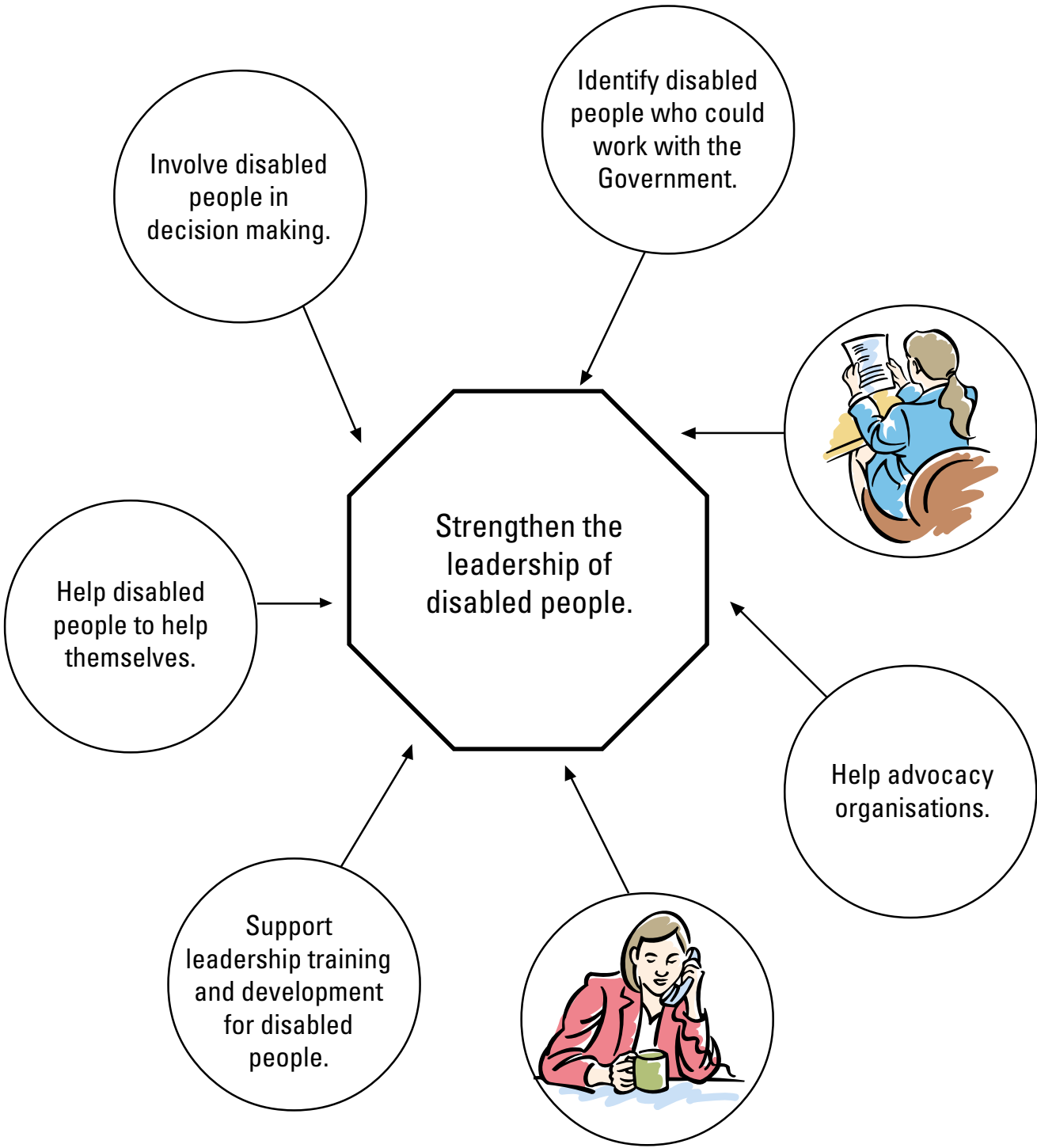
Objective 3



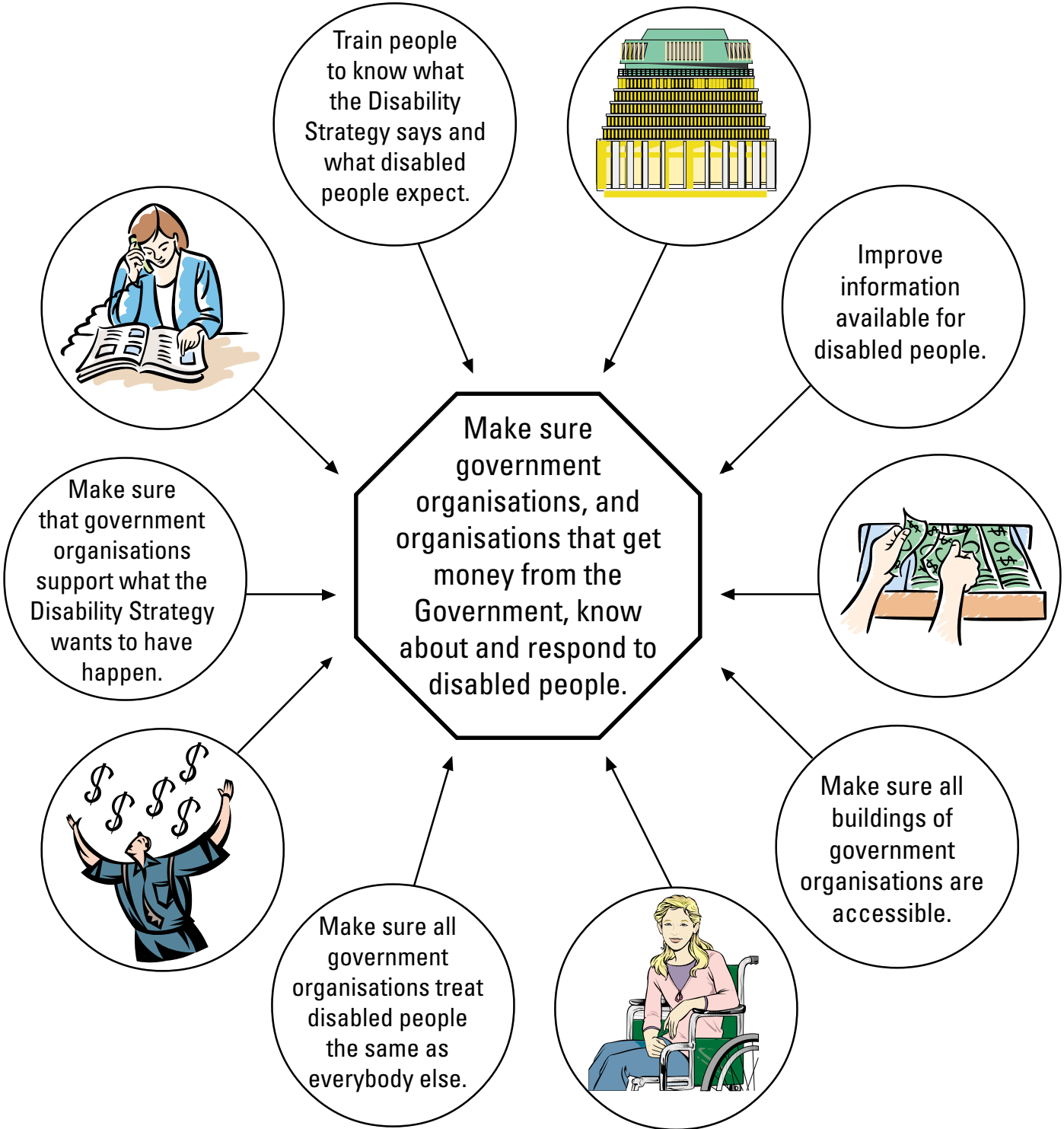
Objective 4



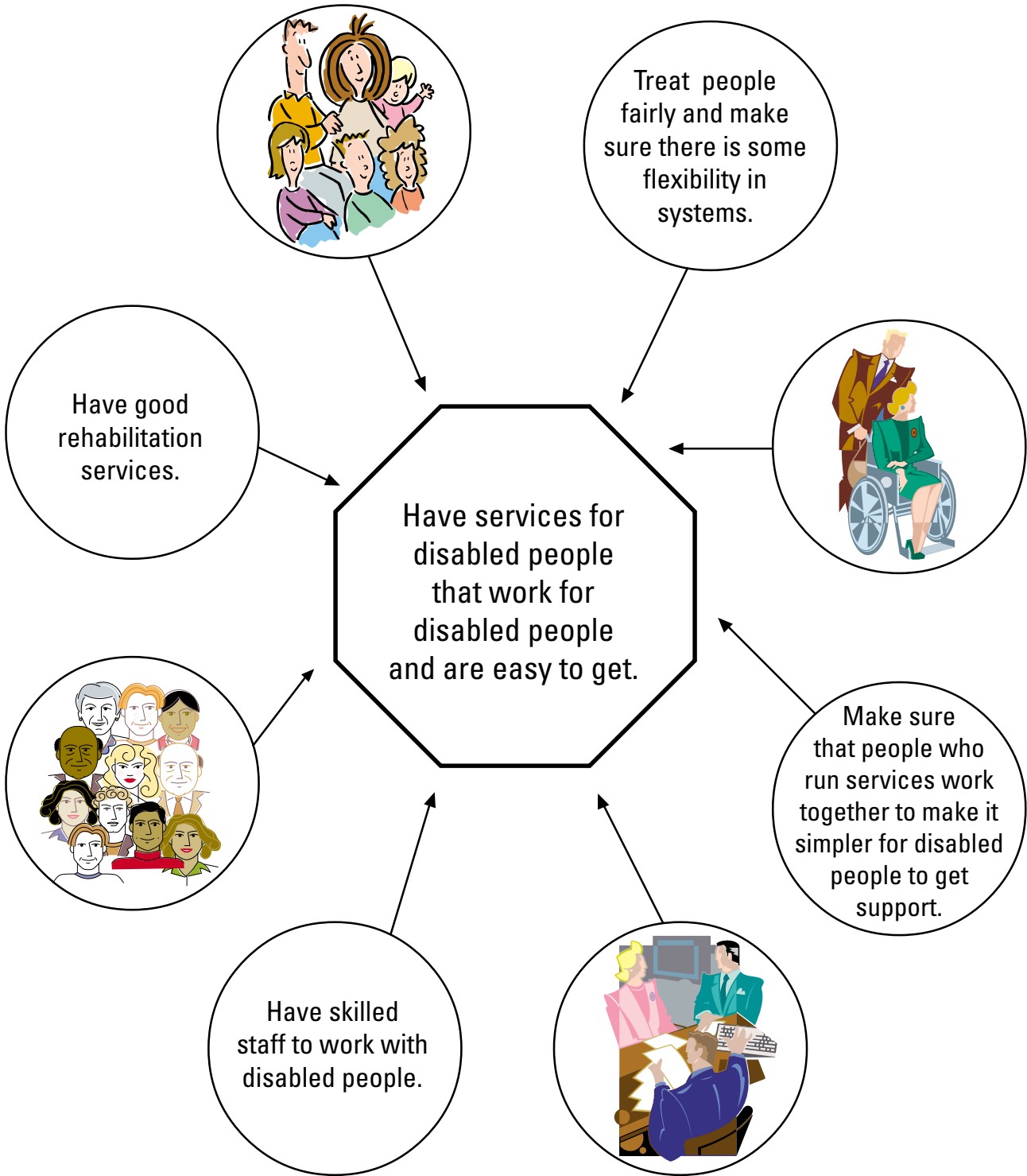
Objective 5



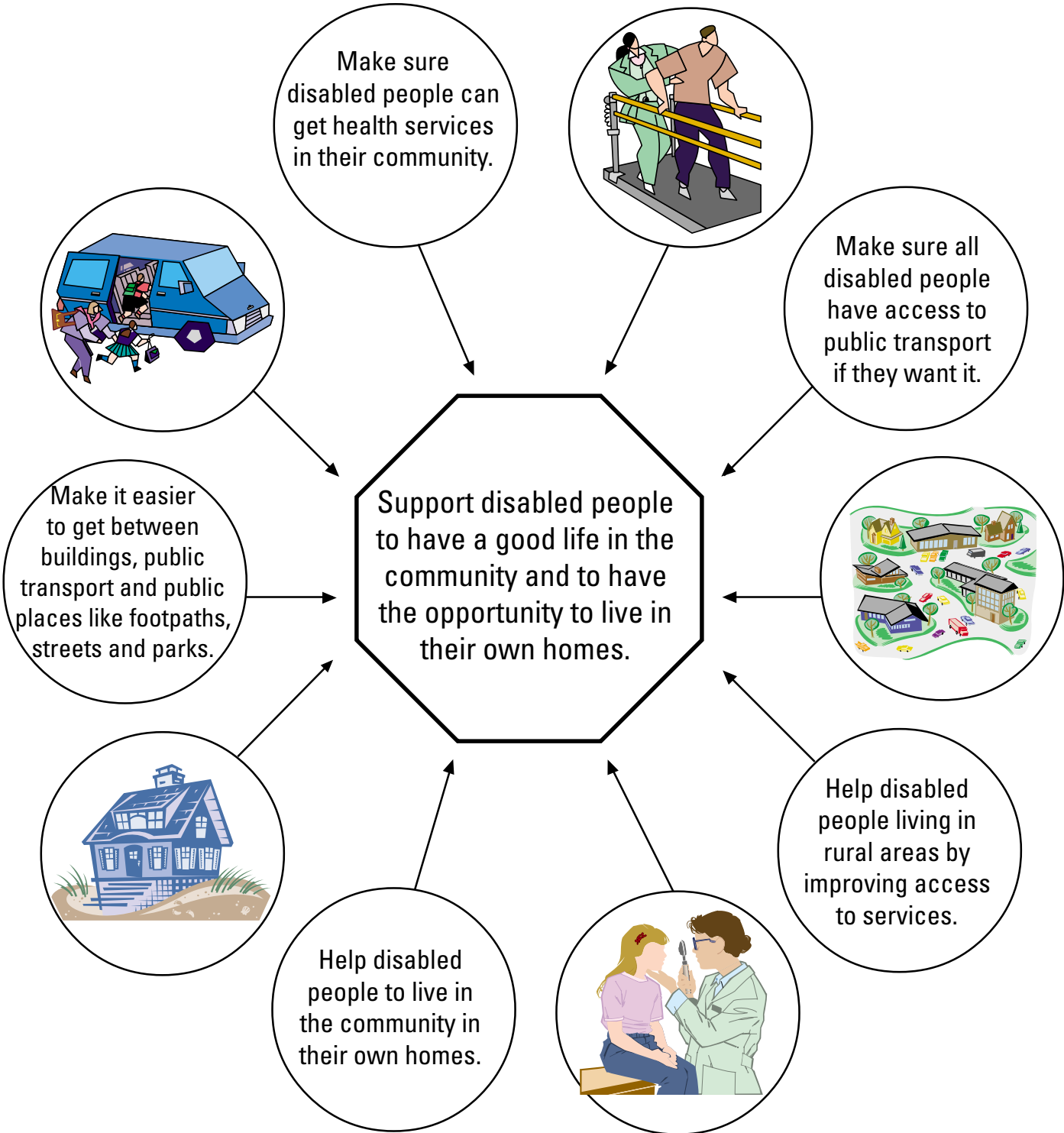
Objective 6



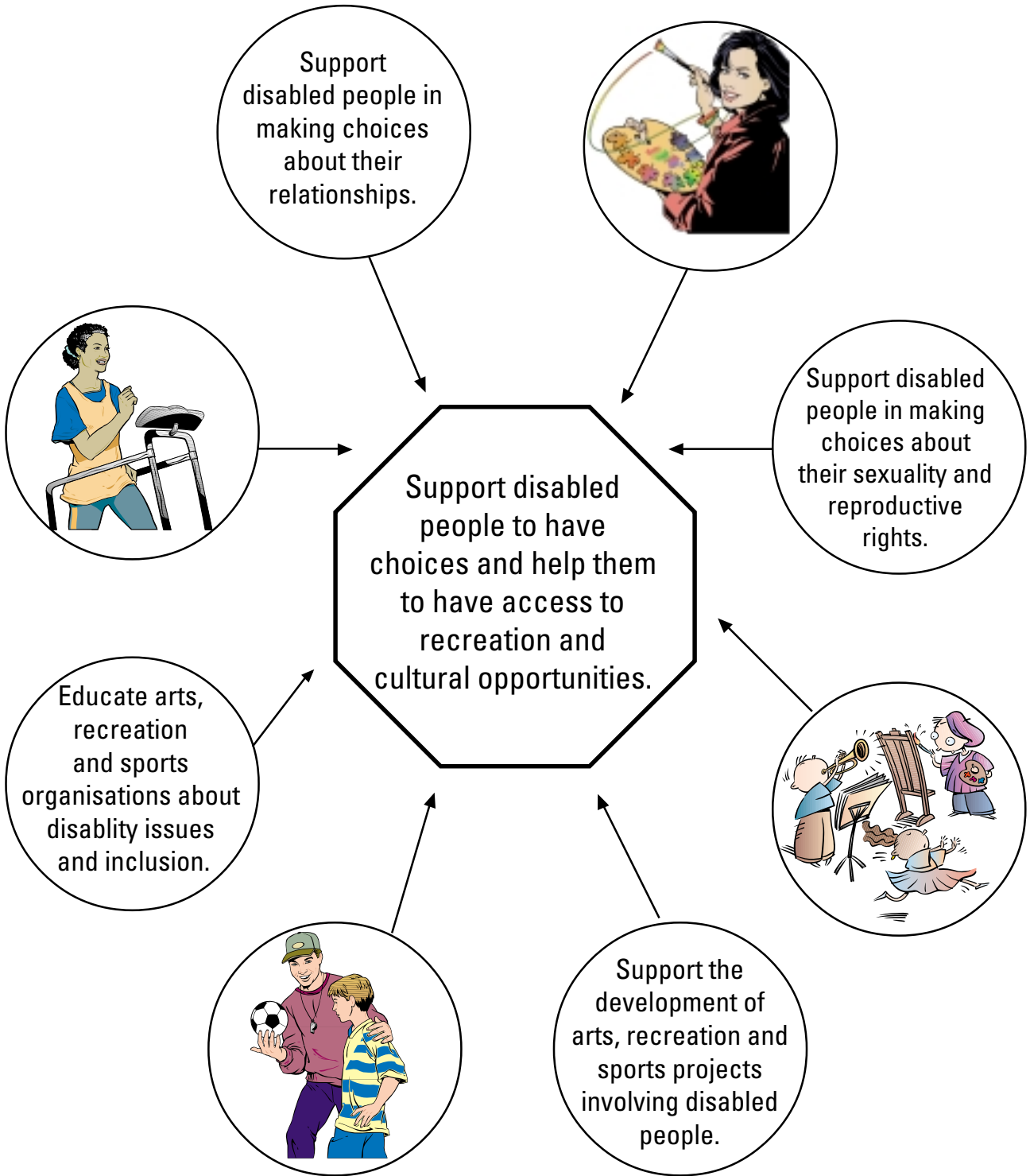
Objective 7



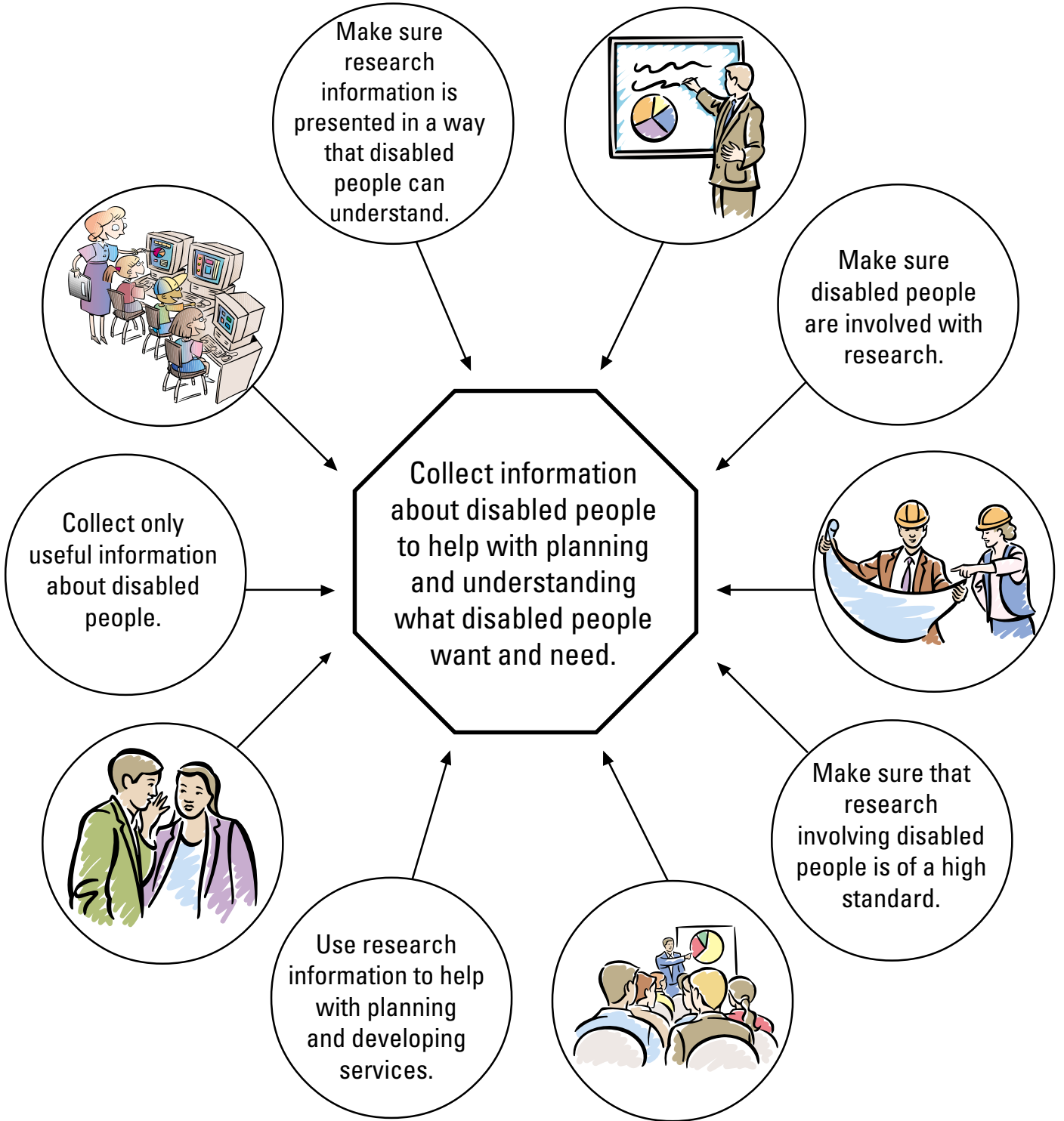
Objective 8



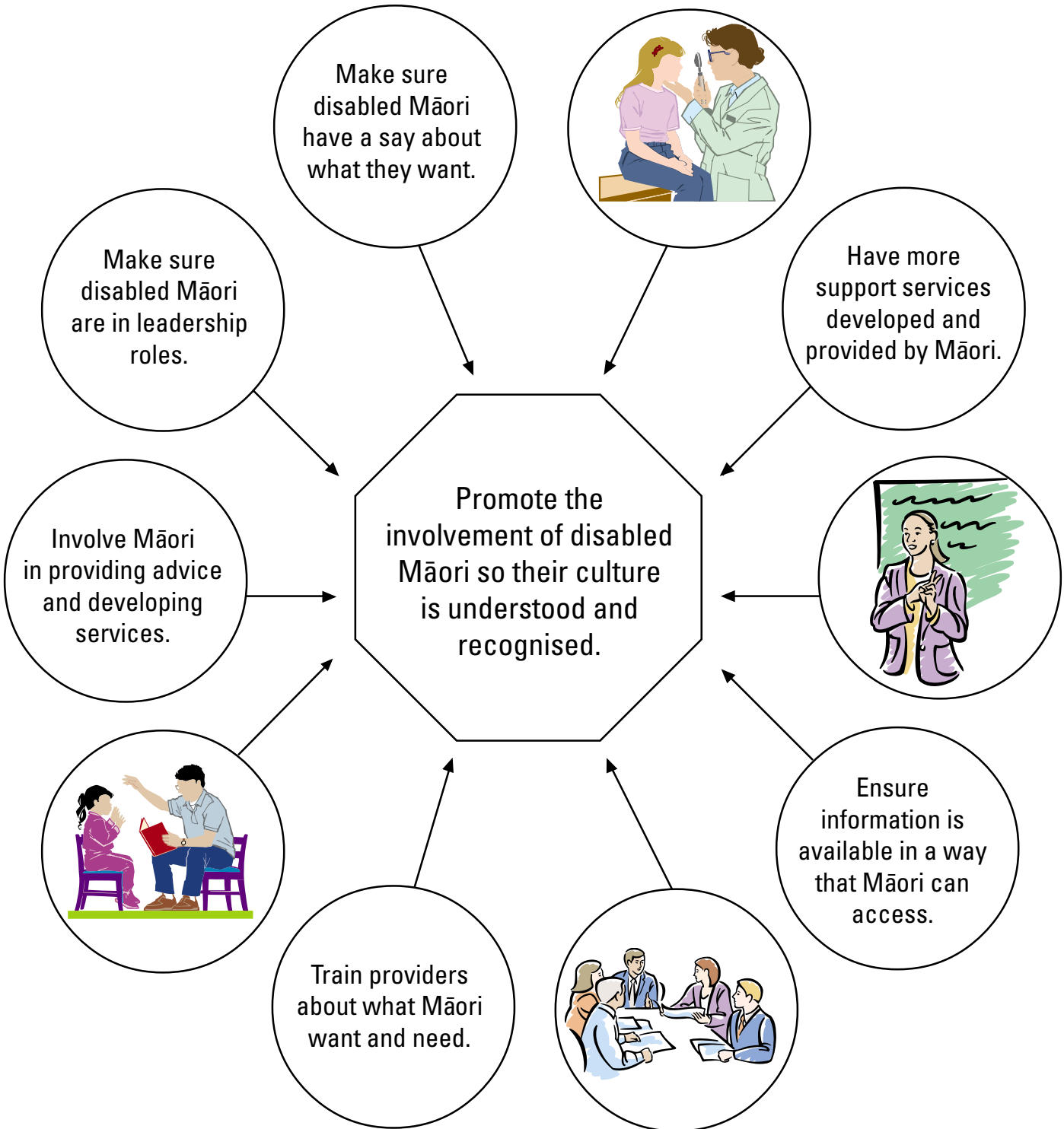
Objective 9



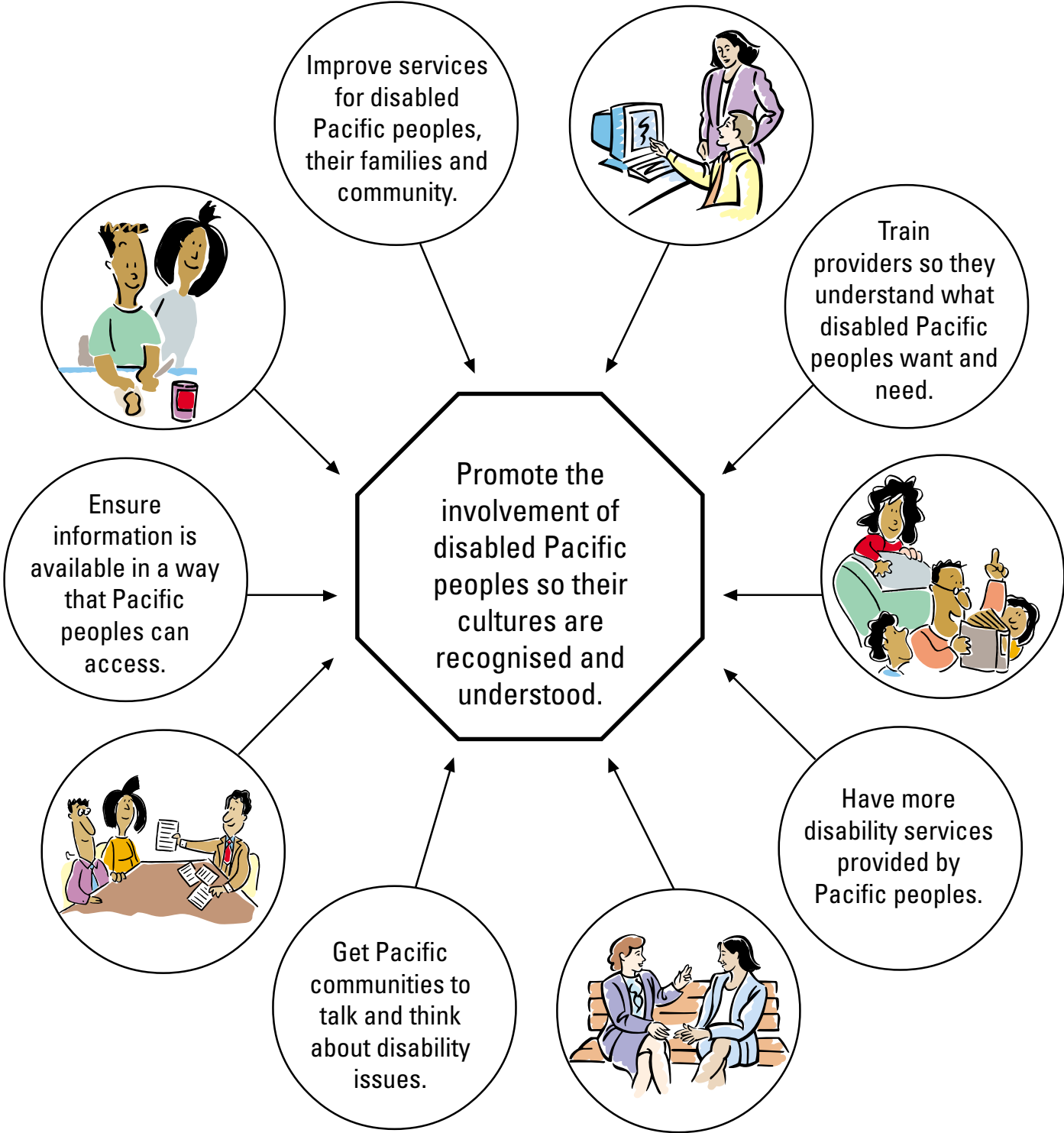
Objective 10



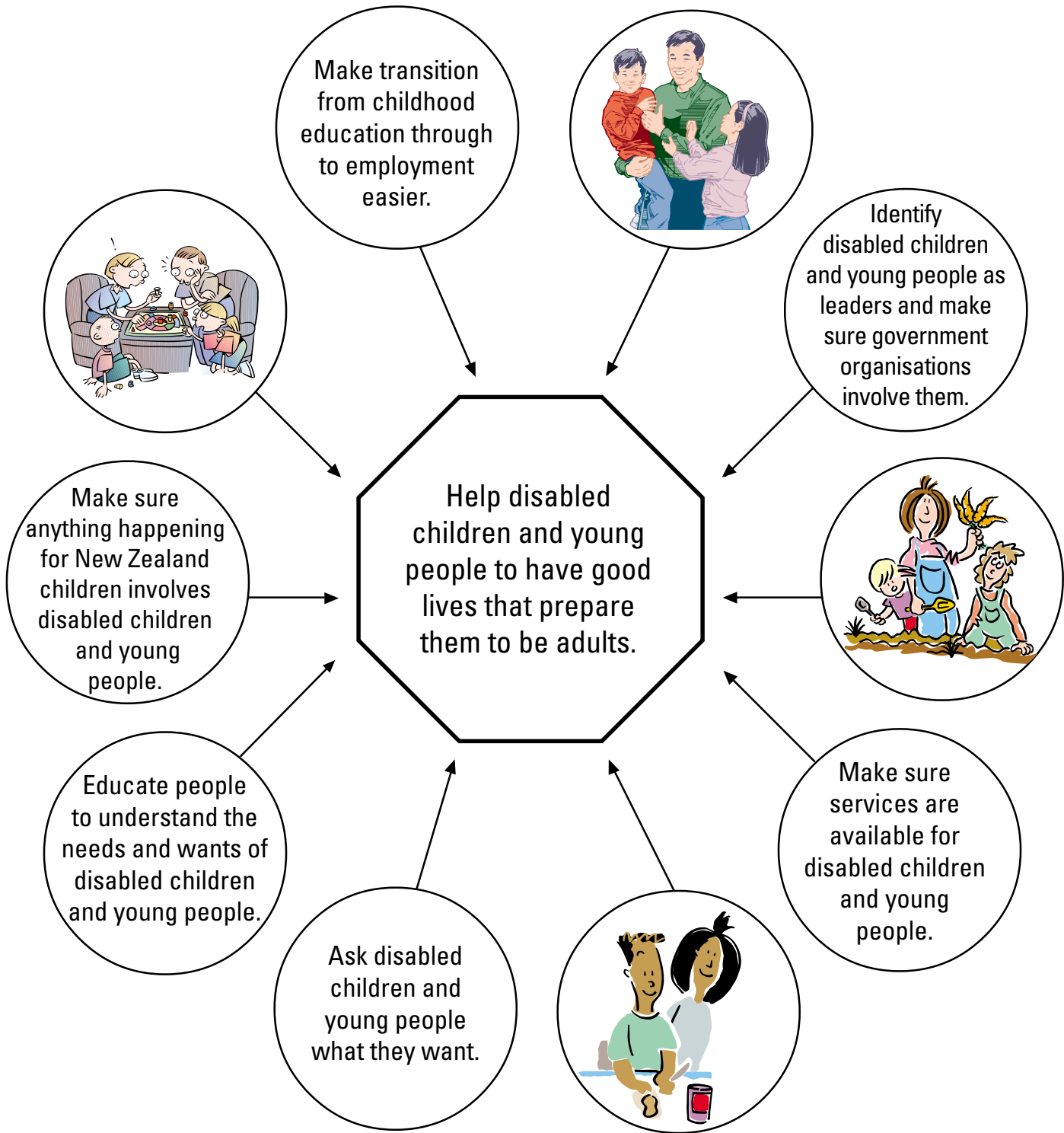
Objective 11



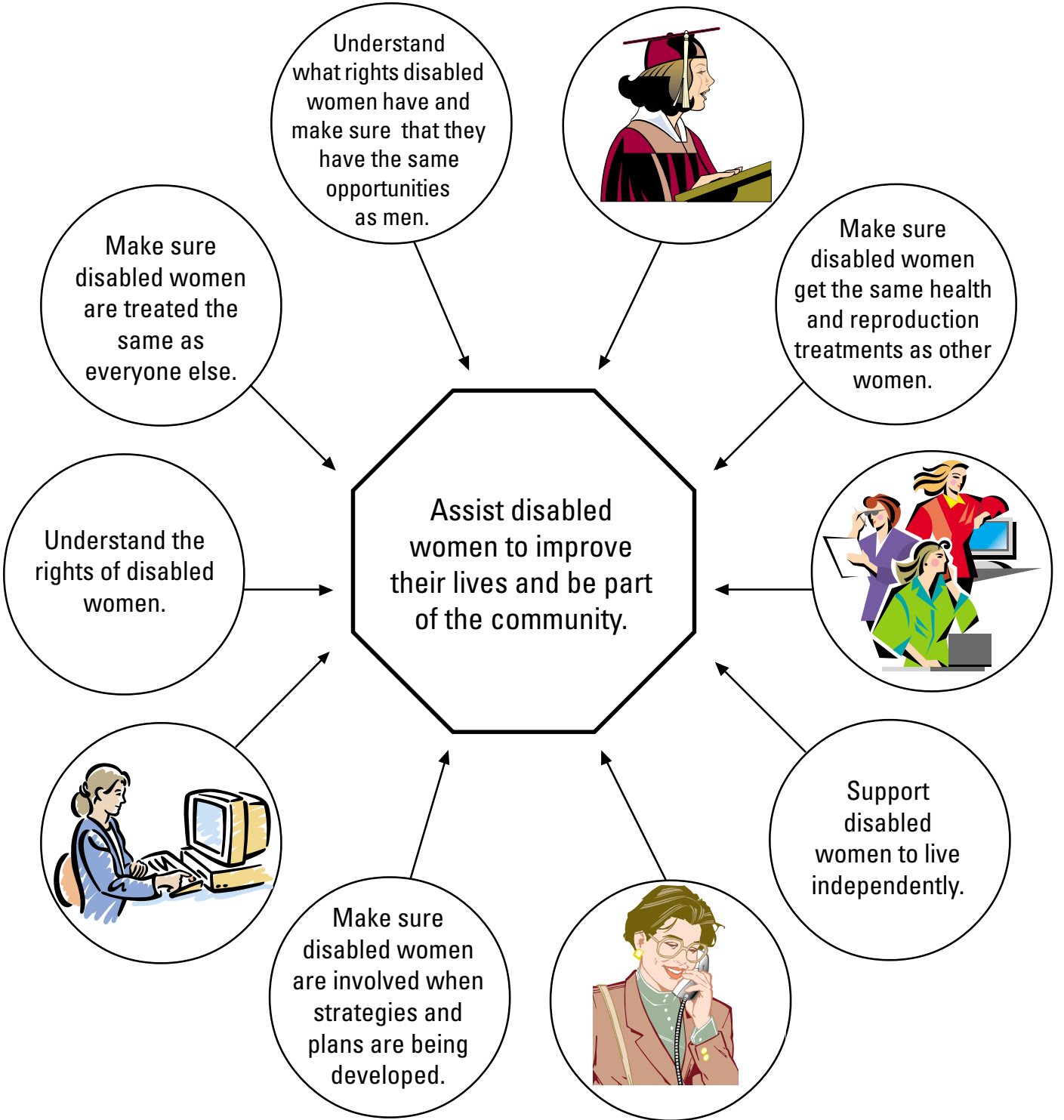
Objective 12



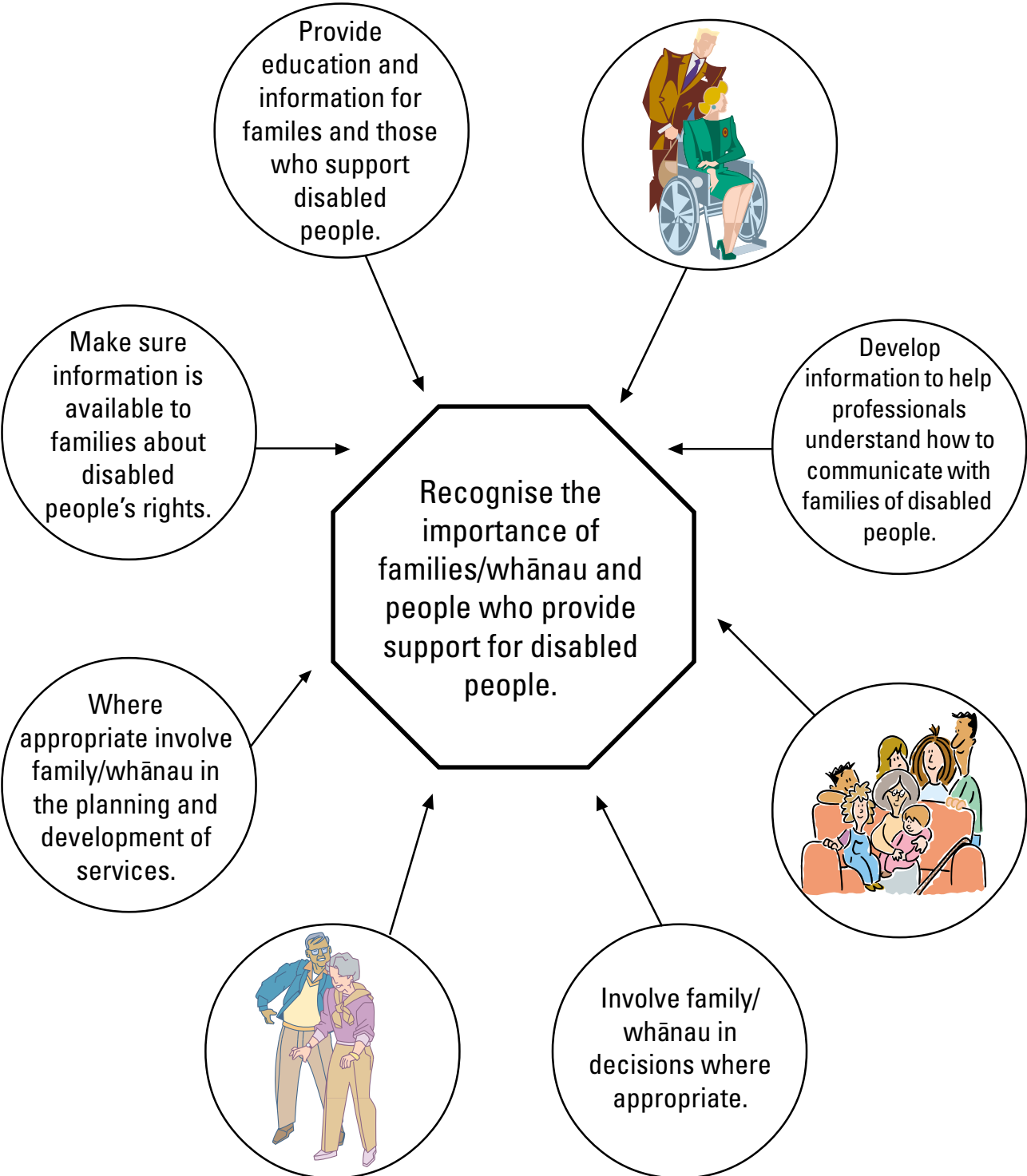
Objective 13



Objective 14



Objective 15



So what next ...

- All government departments/organisations will have to work towards making the things in the New Zealand Disability Strategy happen.
- All government departments will have to make a plan.
- Disabled people need to make sure the Government does what it says it is going to do.